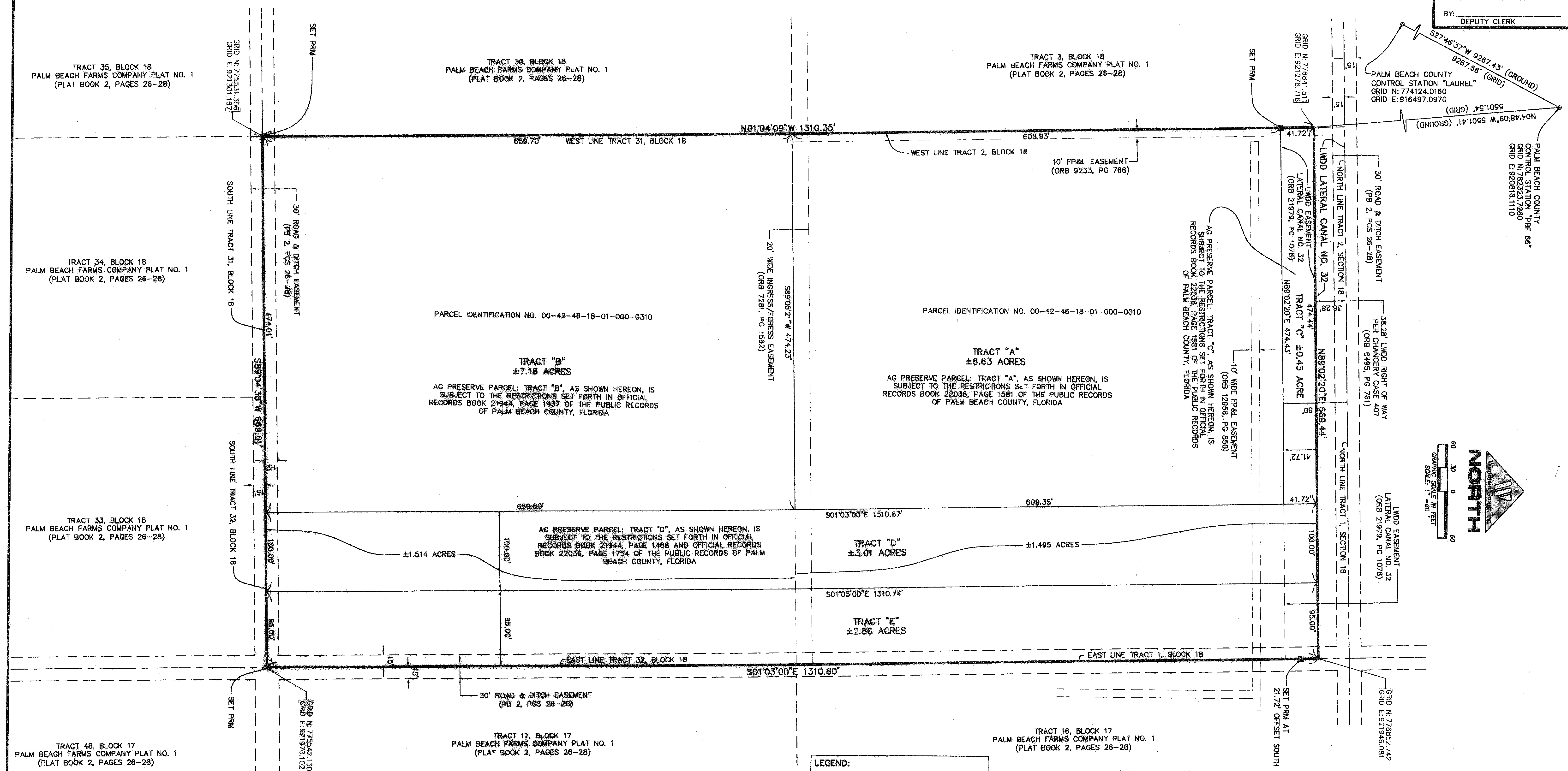


DELRAY MARKETPLACE PRESERVE 1

BEING A REPLAT OF A PORTION OF TRACTS 1 AND 2, BLOCK 18, TOGETHER WITH TRACTS 31 AND 32,
 BLOCK 18, PALM BEACH FARMS COMPANY PLAT NO. 1, ACCORDING TO THE PLAT THEREOF AS
 RECORDED IN PLAT BOOK 2, PAGES 26 THROUGH 28, OF THE PUBLIC RECORDS OF PALM BEACH COUNTY, FLORIDA
 SITUATED IN SECTIONS 17 AND 18, TOWNSHIP 46 SOUTH, RANGE 42 EAST, PALM BEACH COUNTY, FLORIDA
 MARCH, 2008 SHEET 2 OF 2
 PETITION NO. 2004-616 (DELRAY MARKETPLACE)

99

STATE OF FLORIDA
 COUNTY OF PALM BEACH
 THIS PLAT WAS FILED FOR
 RECORD AT _____ M.
 THIS _____ DAY OF _____
 A.D. 2008 AND DULY RECORDED
 IN PLAT BOOK _____ ON
 PAGES _____ THROUGH _____
 SHARON R. BOCK
 CLERK AND COMPTROLLER
 BY: _____
 DEPUTY CLERK



LEGEND:
 FP&L = FLORIDA POWER AND LIGHT
 LB = LICENSE BUSINESS
 LS = LICENSE SURVEY
 LWDD = LAKE WORTH DRAINAGE DISTRICT
 NO. = NUMBER
 ORB = OFFICIAL RECORDS BOOK
 PB = PLAT BOOK
 PG = PAGE
 PGS = PAGES
 FOB = POINT OF BEGINNING
 PRM = PERMANENT REFERENCE MONUMENT
 R/W = RIGHT-OF-WAY

W Wantman Group, Inc.
 Engineering ♦ Surveying ♦ Mapping
 2035 VISTA PARKWAY, SUITE 100
 WEST PALM BEACH, FL 33411
 (561) 687-2220 phone (561) 687-1110 fax
 CERT No. 6091 - LB No. 7055
 THIS INSTRUMENT WAS PREPARED BY MARTIN J. SHATTO, P.S.M.
 PROFESSIONAL SURVEYOR AND MAPPER, REGISTRATION NO. 5219
 IN THE OFFICES OF WANTMAN GROUP, INC.